

# Wi-Fi module installation

操作步骤 User Guide



By Allen , January 17,2022

## 一. Installation needs:

1. The APEX printer.
2. WiFi module.
3. Phillips screwdriver.

**4.The printer must be turned off, power and cable for installation**

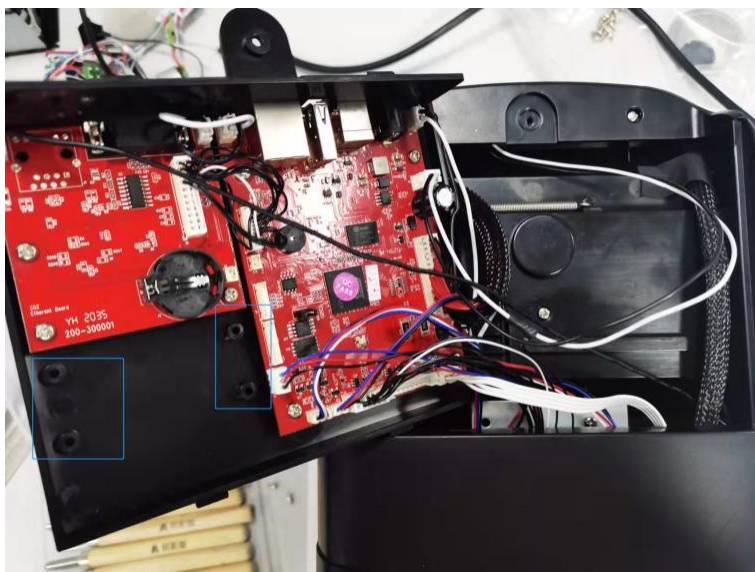
## 二. Installation operation:

1. Remove the middle screw at the bottom of the printer as shown below:

**Note: (Remove only the middle screws)**

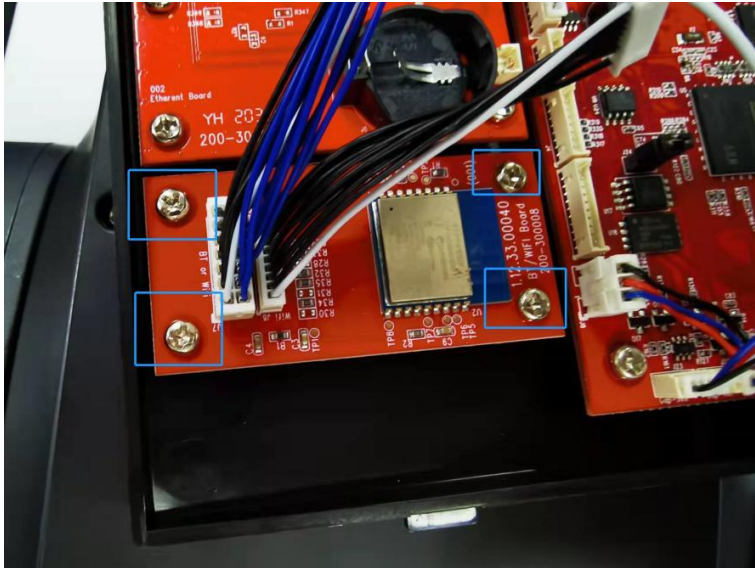


- 2.Find the corresponding screw hole

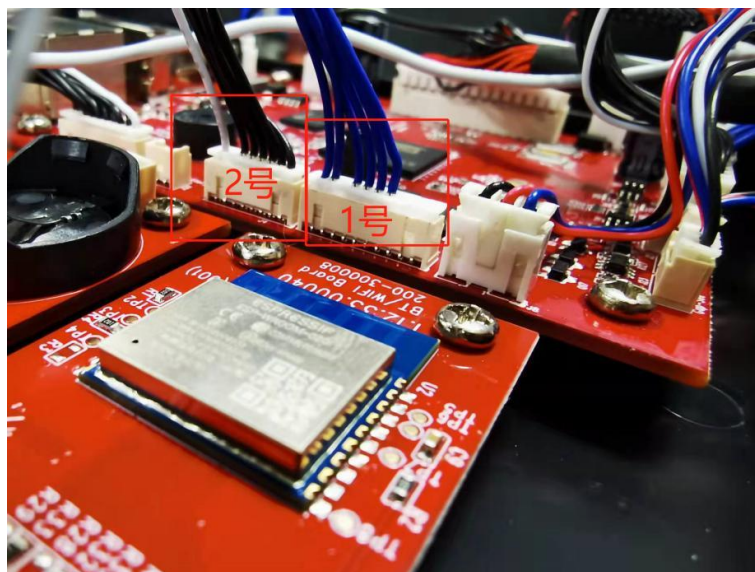


### 3. Install the WiFi module

(Note: front and reverse of WiFi module)



### 4. Connect to the WiFi module line end



Note: (Blue line connects No.1 interface, black and white line connects no. 2 interface)

5. Install the motherboard shell of the machine, and install from behind the motherboard shell. Note: (Do not press any line when installing the motherboard housing) as shown below:

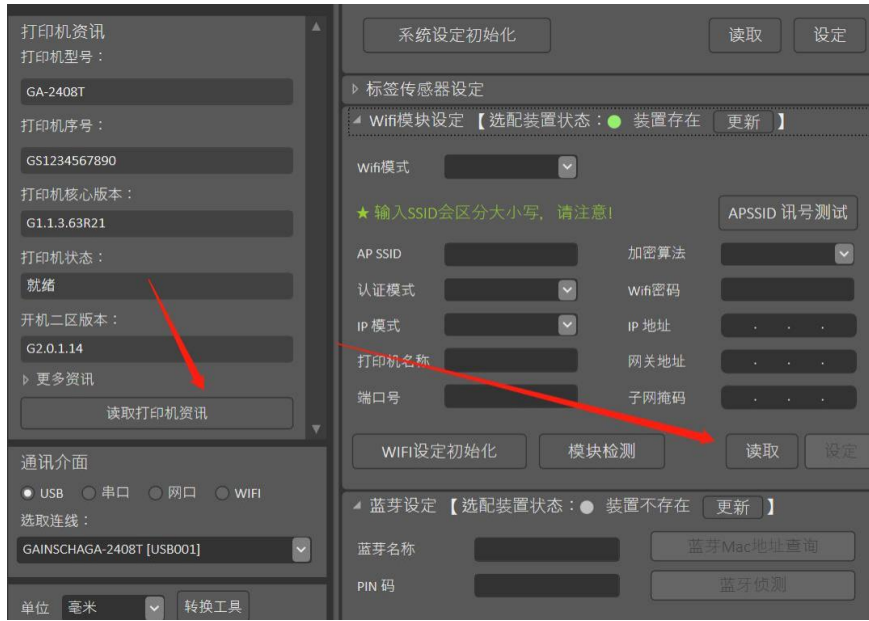


**Note (press down in place and install screws) below:**

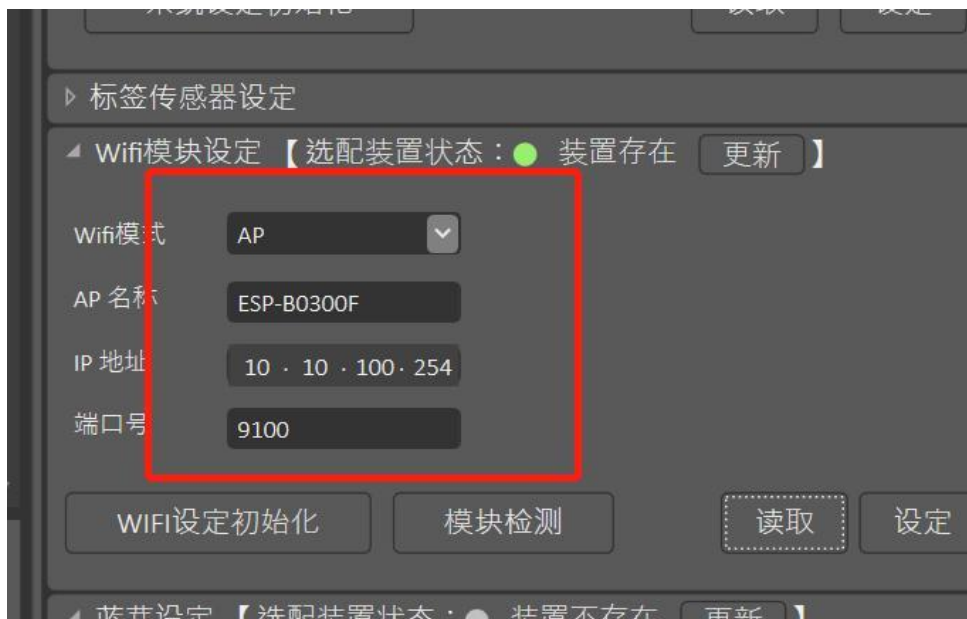


### 三. Check that the module is successfully installed

1. Printer power.
2. Open the Printer Utility software to read the printer information in the following figure:



3. After reading, the AP name, IP address, and port number indicate the success of installing the WiFi module in the following figure:



4. End of the Apex WiFi module installation process.thanks !