

# GA-G4

## CUBE PRINTER

**400**MM/S  
High-Speed Printing

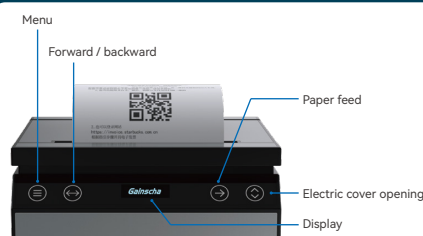


## Key Features

- High-speed 400 mm/sec printing
- 80mm thermal receipt printer with auto cutter
- Ideal for tabletop, under-counter and kiosk space
- Windows, Linux, OPOS, JPOS driver available
- USB+Ethernet+RS232 standard connectivity
- Wireless Bluetooth, Wi-Fi, or 4G network as choice
- Advanced Touch Operation and LCD Display for Printers
- Front-paper-exit and top-paper-exit for your installation convenience



Compact Footprint



Touch operation & LCD display



User-friendly cover-open

# 80mm Thermal Receipt Printer

MODEL	GA-G4
Print method	Direct Thermal
Resolution	203DPI
Print speed	400mm/sec
Emulation	ESC/POS
Paper width	79.5±0.5 x 80mm 57.5±0.5 x 80mm
Print width	72mm
Paper output	Top exit & Front exit
Interface	USB 2.0 + Serial + Ethernet + RJ11 CashDrawer Wi-Fi (Optional) Bluetooth (Optional) 4G Network (Optional)
Barcode type	UPC-A, UPC-E, EAN/JAN-8, EAN/JAN-13, CODE39, ITF, CODABAR, CODE93, CODE128, QRCODE
Print head life	150 km print length or 100 million pulses
Auto cutter life	1.5 million cuts
Operating system	Support Windows、Linux、Mac Driver
Net weight	1.5KG
Dimension	130mm(L) * 130mm(W) * 130mm(H)



## Work environment

- Temperature: 0-50°C
- Humidity: 20~80%RH

## Accessories

- Windows label editing software, Driver and Operator's Manual CD-ROM
- Quick Installation Guide
- Power adapter
- USB cable



SMALL SIZE

EASY TO PLACE



## Application Industries



Healthcare



Fine-Dining



Hotel



Large Retailer



Retail



Shopping Mall

